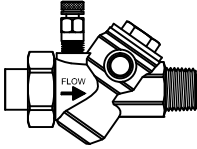
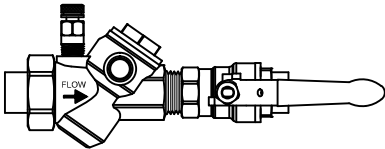


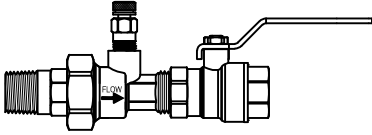
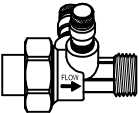
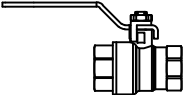


# US Industrial Sourcing, L.L.C.

## QUICK REFERENCE GUIDE

### BRASS BALANCING VALVES

Automatic Flow Limiting (½" - 2")		
Model AFLD	 <i>Patent Pending</i>	The USIS AFLD is an Automatic Flow Limiting device, male ended by union, rated at 600 WOG. The AFLD is supplied with a stainless steel flow limiting cartridge that can be removed for cleaning, inspection, and if necessary, cartridge exchange. The AFLD comes standard with two pressure/temperature ports and a hanging ID tag for easy identification. 2 - +60 PSID
Model AFLB	 <i>Patent Pending</i>	The USIS AFLB is an Automatic Flow Limiting device, male ended by union with a full port ball valve attached, rated at 600 WOG. The AFLB is supplied with a stainless steel flow limiting cartridge that can be removed for cleaning, inspection, and if necessary, cartridge exchange. The AFLB comes standard with two pressure/temperature ports and a hanging ID tag for easy identification. 2 - +60 PSID

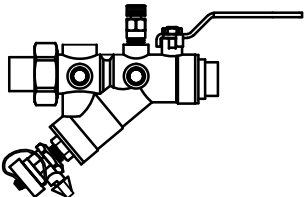
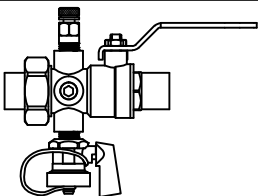
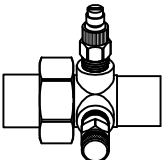
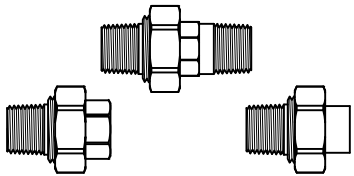
Manual Balancing (½" - 2")		
Model CBV		The USIS CBV combines a fixed end NPTF or SWT ball valve and brass venturi that provides highly accurate flow measurement. The efficient low loss venturi design provides effective flow balancing with minimal pressure loss. The CBV comes standard with two pressure/temperature ports. The union side connection options include NPTM, NPTF, SWT, and a variety of reductions.
Model VU		The USIS Model VU is a flow balancing brass venturi that provides highly accurate flow measurement. The efficient low loss venturi design provides effective flow measuring with minimal pressure loss. The VU comes standard with two pressure/temperature ports for instrument readings. The union side connection options include NPTM, NPTF, SWT, and a variety of reductions.
Model BV		The USIS Model BV is a brass ball valve available with a standard or full port ball that is rated at 600 WOG. All ball valves come standard with a memory stop, blow-out proof stem, double o-ring stem seal, and adjustable stem packing nut. The available end connections include FPT x FPT, SWT x SWT, and FPT x SWT.

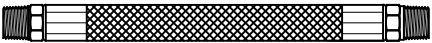


# US Industrial Sourcing, L.L.C.

## QUICK REFERENCE GUIDE

### BRASS COIL KIT ACCESSORIES

Coil Kit Accessories (½" - 2")		
Model IVY		Integral ball valve, wye-strainer and union rated at 600 WOG. IVY uses a full-port ball valve for positive shut-off service and offers a total of five 1/4" taps for accessories to be installed. A by-pass tap is provided at the forward 12:00 position for 1/2" through 2". The strainer cap has a 1/4" tap in the blow down section for a hose-end drain with a 20 mesh stainless steel screen. The fixed end connections may be NPTF or SWT. The union side connections available include NPTM, NPTF, SWT, and a variety of reductions.
Model IBU		The USIS Integral Ball valve/Union is rated at 600 WOG. The IBU uses a combination full-port ball valve and union which provides three 1/4" taps for accessories to be installed. All taps are plugged unless specified. Fixed end connections may be SWT or NPTF. Union side connections available include NPTM, NPTF, and SWT, and a variety of reductions.
Model AU		The USIS Model AU is a brass accessory union that provides for component isolation. Port section contains two 1/4" ports that come predrilled from the factory and are positioned 90° apart. The union side incorporates an o-ring for maximum sealing protection. Accessory union comes standard with 1/4" plugs installed in the ports. Union side and port side connections available in NPTM, NPTF, and SWT. Rated at 600 WOG @ 250° F.
Model UA		The USIS Model UA is a brass NPTM x union adapter that connects to NPTF ended products. The UA converts line connections types and offers line size reductions. The union tail pieces are available in NPTF, NPTM, and SWT ends. Refer to the Model UA Submittal product selection guide for available reductions. The UA ships as a configured kit consisting of the UA body, o-ring, union nut, and tail piece.

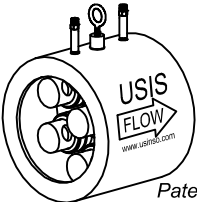
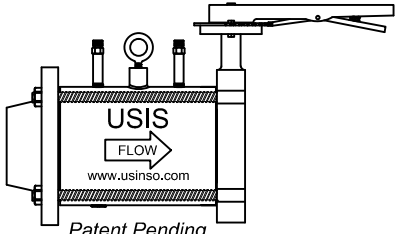
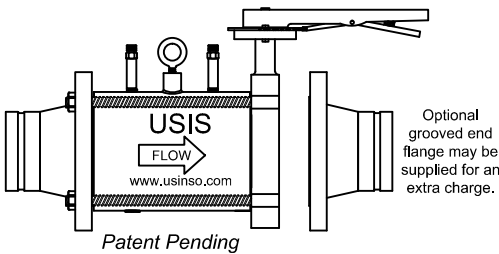
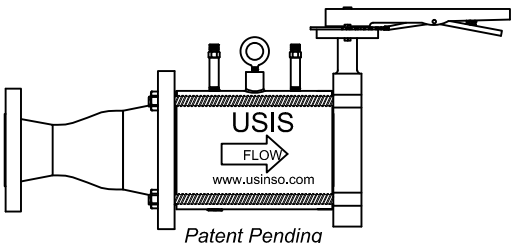
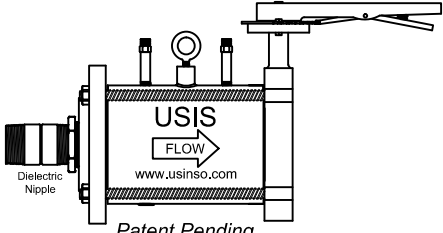
Coil Kit Accessories - Hoses		
Model HSS		The USIS Model HSS is a stainless steel hose that is braided for corrosion resistance. The flexible hose eases installation and is suitable for hot or cold applications. The HSS has GRIP-MATE couplings for better connections and fully crimped ferrule for stronger coupling retention. Model HSS is available in 12", 18", 24", 30", and 36" lengths.

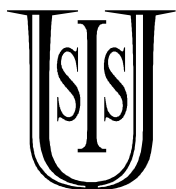


# US Industrial Sourcing, L.L.C.

## QUICK REFERENCE GUIDE

### STEEL BALANCING PRODUCTS

Automatic Balancing - Steel (2½" - 14")	
<p><b>Model AFLW</b></p>  <p><i>Patent Pending</i></p>	<p>The USIS AFLW is a wafer type Automatic Flow Limiting Device with a full flange face. The AFLW is designed to fit between two ANSI Class 150 pound flanges. The AFLW is supplied with one or more stainless steel flow limiting cartridges that can be removed for cleaning, inspection, and, if necessary, cartridge exchange. The AFLW has two predrilled openings for pressure/temperature ports, a drain plug, and a lifting lug for ease in installation.</p>
<p><b>Model AFLWF</b></p>  <p><i>Patent Pending</i></p>	<p>The USIS AFLWF is a combination butterfly valve, wafer style automatic flow limiting device, and an ANSI Class 150# weld neck flange. The full flange face wafer contains one or more stainless steel flow limiting cartridges that are preset at the factory for a specific flow, and can be removed for cleaning, and/or cartridge exchange. The cast iron butterfly valve has a combination infinite/10 position memory stop plate, a one piece disc/shaft, a triple shaft bearing, an aluminum-bronze disc for sizes 2½" - 8", a nickel plated disc for the 10" and 12" sizes, and an EPDM liner.</p>
<p><b>Model AFLWG</b></p>  <p><i>Patent Pending</i></p> <p>Optional grooved end flange may be supplied for an extra charge.</p>	<p>The USIS AFLWG is a combination butterfly valve, wafer style automatic flow limiting device, and an ANSI Class 150# grooved end flange. The full flange face wafer contains one or more stainless steel flow limiting cartridges that are preset at the factory for a specific flow, and can be removed for cleaning, and/or cartridge exchange. The cast iron butterfly valve has a combination infinite/10 position memory stop plate, a one piece disc/shaft, a triple shaft bearing, an aluminum-bronze disc for sizes 2½" - 8", a nickel plated disc for the 10" and 12" sizes, and an EPDM liner. The AFLWG may be supplied with an additional flange grooved adapter for an additional charge.</p>
<p><b>Model AFLWR</b></p>  <p><i>Patent Pending</i></p>	<p>The USIS AFLWR is a combination butterfly valve, wafer style automatic flow limiting device, and an ANSI Class 150# reducing flange. The AFLWR is designed to connect directly to a smaller size flanged ATC (Automatic Temperature Control) valve. The full flange face wafer contains one or more stainless steel flow limiting cartridges that are preset at the factory for a specific flow. The cartridges can be removed for cleaning, and if necessary, cartridge exchange.</p>
<p><b>Model AFLWT</b></p>  <p><i>Patent Pending</i></p> <p>Dielectric Nipple</p>	<p>The USIS AFLWT is a combination butterfly valve, wafer style automatic flow limiting device, and an ANSI Class 150# threaded flange. The AFLWT is designed to connect directly to a threaded brass ATC (Automatic Temperature Control) valve. The AFLWT provides the dielectric protection needed for steel pipe. The full flange face wafer contains one or more stainless steel flow limiting cartridges that are preset at the factory for a specific flow, and can be removed for cleaning, and if necessary, cartridge exchange.</p>



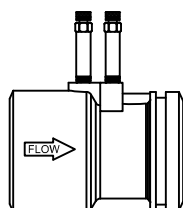
# US Industrial Sourcing, L.L.C.

## QUICK REFERENCE GUIDE

### STEEL BALANCING PRODUCTS

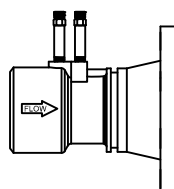
#### Manual Balancing - Steel (2½" - 14")

Model SWV



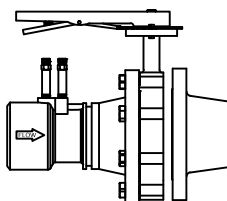
The USIS SWV is a steel venturi with weld ends that is designed for highly accurate flow measurement with low pressure loss. High and low flow ranges are available in the 2½", 3", and 4" sizes. The SWV comes standard with two pressure/temperature ports.

Model SWVF



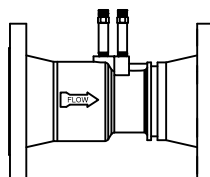
The USIS SWVF is a weld end by flange end style steel venturi. The carbon steel venturi connects to a standard ANSI Class 150 pound flange. The venturi is designed for highly accurate flow measurement with low pressure loss. High and low flow ranges are available in the 2½", 3", and 4" sizes.

Model CBVW



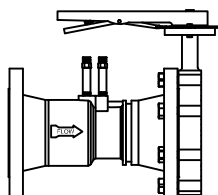
The USIS CBVW is a combination butterfly valve and weld end style venturi. The weld end carbon steel venturi connects to a standard ANSI Class 150 pound flange, and is combined with a lug type butterfly valve for throttling. The cast iron butterfly valve has a combination infinite/10 position memory stop plate, a one piece disc/shaft, a triple shaft bearing, an aluminum-bronze disc for sizes 2½" - 8", a nickel plated disc for the 10" and 12" sizes, and an EPDM liner.

Model SFV



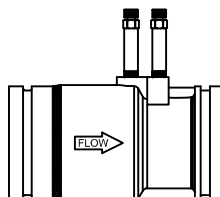
The USIS SFV is a flanged end style venturi. The carbon steel venturi connects to standard ANSI Class 150 pound flanges. The venturi is designed for highly accurate flow measurement with low pressure loss. High and low flow ranges are available in the 2½", 3", and 4" sizes.

Model CBVF



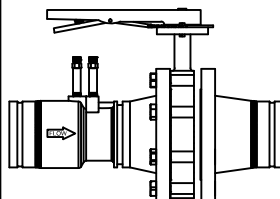
The USIS CBVF is a combination butterfly valve and flanged style venturi. The carbon steel venturi connects to standard ANSI Class 150 pound flanges, and is combined with a lug type butterfly valve for throttling. The cast iron butterfly valve has a combination infinite/10 position memory stop, a one piece disc/shaft, a triple shaft bearing, an aluminum-bronze disc for sizes 2½" - 8", a nickel plated disc for the 10" and 12" sizes, and an EPDM liner.

Model SGV



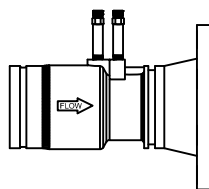
The USIS SGV is a steel Venturi with grooved ends that is designed for highly accurate flow measurement with low pressure loss. High and low flow ranges are available in the 2½", 3", and 4" sizes. The SGV comes standard with two pressure/temperature ports.

Model CBVG



The USIS CBVG is a combination butterfly valve and venturi, grooved end style. The grooved end carbon steel venturi connects to a standard ANSI Class 150 pound flange, and is combined with a lug type butterfly valve for throttling. The cast iron butterfly valve has a combination infinite/10 position memory stop plate, a one piece disc/shaft, a triple shaft bearing, an aluminum-bronze disc for sizes 2½" - 8", a nickel plated disc for the 10" and 12" sizes, and an EPDM liner.

Model SGVF



The USIS SGVF is a grooved by flange style venturi. The grooved end carbon steel venturi connects to a standard ANSI Class 150 pound flange. The venturi is designed for highly accurate flow measurement with low pressure loss. High and low flow ranges are available in the 2½", 3", and 4" sizes.



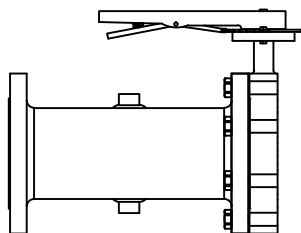
# US Industrial Sourcing, L.L.C.

## QUICK REFERENCE GUIDE

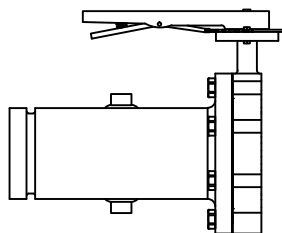
### COIL KIT ACCESSORIES

#### Coil Kit Accessories - Steel Hook-Ups

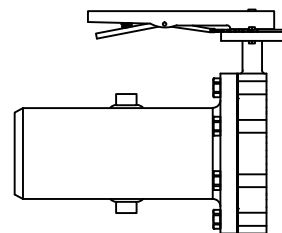
The USIS carbon steel hook-up accessory series is available in several end connections, providing a platform for accessory options. Options are installed in 1/2" threaded ports. The two ports are located at the 12:00 and 6:00 positions. Other port locations and port sizes such as 1/4", 3/4", and 1" are available for an additional charge. Optional flange end connections consist of Standard ANSI Class 150 pound raised-face flanges. The optional butterfly valve is rated for dead end service of 150 psi. Custom fabrications and custom lengths are available at an additional charge.



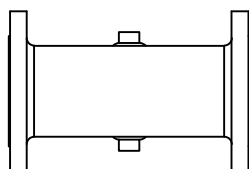
Model AFB  
Flange x Butterfly Valve



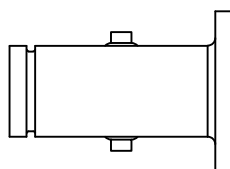
Model AGB  
Groove x Butterfly Valve



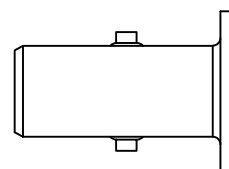
Model AWB  
Weld x Butterfly Valve



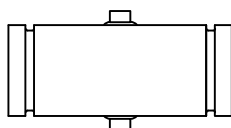
Model AFF  
Flange x Flange



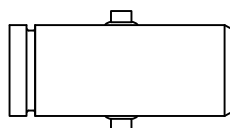
Model AFG  
Flange x Groove



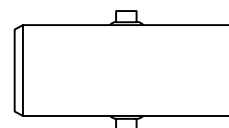
Model AFW  
Flange x Weld



Model AGG  
Groove x Groove

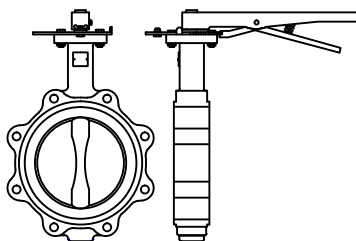


Model AGW  
Groove x Weld



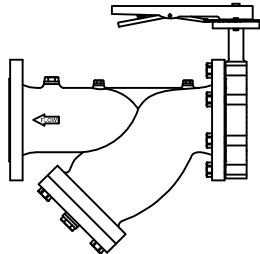
Model AWW  
Weld x Weld

Model BFV



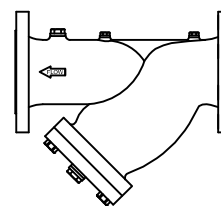
The USIS Model BFV is a lug type butterfly valve used for throttling, that is designed to be installed between standard ANSI Class 150 pound flanges. The Model BFV has a combination infinite/10 position chrome plated memory stop plate, a triple shaft bearing, a one piece disc/shaft, an aluminum-bronze disc for sizes 2½" - 8", a nickel plated disc for the 10" and 12" sizes, and an EPDM liner.

Model CBYS



The USIS CBYS is a combination butterfly valve and flange x flange end wye strainer. The cast iron wye strainer has standard ANSI Class 150 pound flange ends that connect to a lug type butterfly valve for throttling/isolation. The strainer comes with a stainless steel filter element.

Model CYS



The USIS CYS is a flange x flange end wye strainer. The cast iron wye strainer has standard ANSI Class 150 pound flange ends. The wye strainer comes standard with a stainless steel filter element, two ¼" plugs, a ½" plug, a plugged ¾" blow-off connection, and a flanged blow-off cover with an EPDM o-ring.