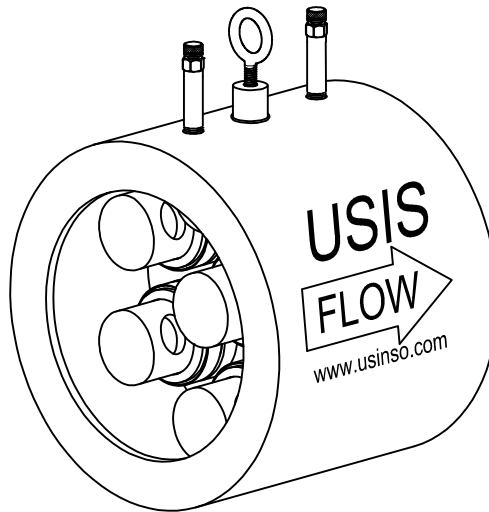


# US Industrial Sourcing, L.L.C.

## SPECIFICATIONS

### Automatic Flow Limiter Wafer Style AFLW Series



**PRODUCT DESCRIPTION:** The USIS AFLW is a wafer type Automatic Flow Limiting Device with a full flange face. The AFLW is designed to fit between two ANSI Class 150 pound flanges. The AFLW is supplied with one or more stainless steel flow limiting cartridges that can be removed for cleaning, inspection, and, if necessary, cartridge exchange. The AFLW has two predrilled openings for pressure/ temperature ports, a drain plug, and a lifting lug for ease in installation.

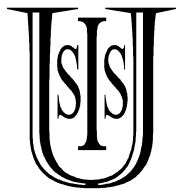
STANDARD MATERIAL SPECIFICATIONS		STANDARD OPERATING SPECIFICATIONS	
Wafer	ASTM A536 Ductile Iron	Control range:	2 psi - 60+ psi
O-Ring	EPDM	Accuracy:	±5%
Flow Cartridge	ASTM A582 Type 303 Stainless Steel	Max Working Pressure:	600 WOG
Diaphragm	EPDM	Max Operating Temperature:	40°F to 250°F
Spring	Stainless Steel	Start-Up Head Loss:	5 Feet of H <sub>2</sub> O
PT Port	EPDM Dual Durometer Core		
Lifting Lug	ASTM F541 Steel		

*NOTE: The specific ASTM standard may vary and should be confirmed at time of order.*

#### PRODUCT SPECIFICATIONS:

- Stainless steel construction on all flow cartridge wear surfaces
- Static orifice design that maximizes the size of the flow orifice across large pressure differentials
- Large operational differential range across the flow cartridge
- Provides continual flow at differential pressures above design limits
- Removable cartridges for cleaning or exchange if required
- Flushing through the cartridge body in case debris gets inside the cartridge
- Low start-up pressure to operate with low energy requirements

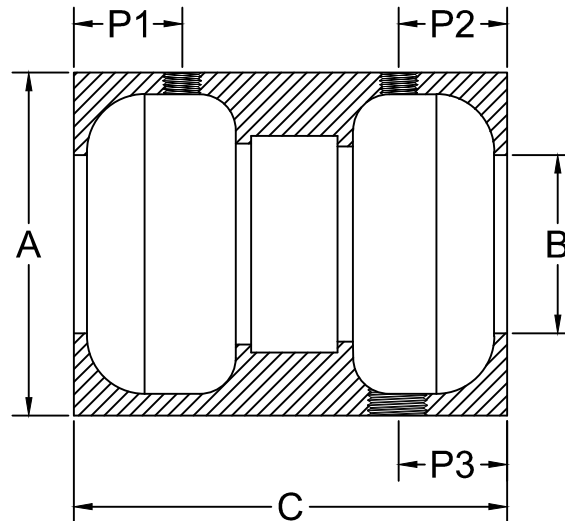
The information presented in this submittal is correct at the time of publication. US Industrial Sourcing, L.L.C. reserves the right to change design, and/or material specifications without notice.



# US Industrial Sourcing, L.L.C.

## DIMENSIONS

### Automatic Flow Limiter Wafer Style AFLW Series



SIZE	MODEL	A	B	C	P1	P2	P3	WEIGHT (lbs)	# OF AFL CARTRIDGES	MAX GPM FLOW
2½"	AFLW250	4.5	2.47	8.0	1.51	1.25	1.25	14	1	180
3"	AFLW300	5.2	3.07	8.0	1.51	1.25	1.25	16	1	180
4"	AFLW400	6.7	4.15	9.0	2.20	2.20	2.20	25	2	360
6"	AFLW600	8.6	6.07	9.0	2.00	2.00	2.00	35	4	720
8"	AFLW800	10.8	7.98	9.0	2.03	1.97	1.97	55	7	1260
10"	AFLW1000	13.3	10.5	12.0	2.90	2.90	2.90	74	12	2160
12"	AFLW1200	15.5	12.0	12.0	3.00	3.00	3.00	100	15	2700
14"	AFLW1400	17.7	13.46	12.0	3.20	3.20	3.20	131	19	3420

*Note: All dimensions, weights, and materials are subject to minor variations.  
Consult with factory for confirmation of dimensions and material specifications.*